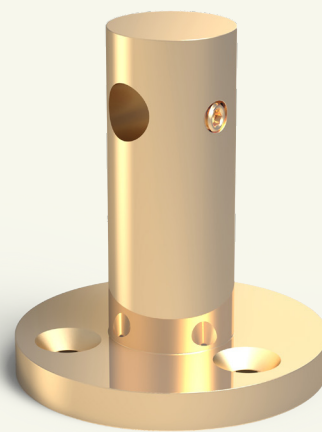


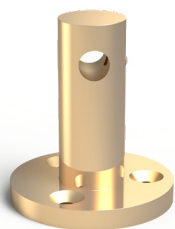
Center Bracket

Gallery Rail

This satin brushed brass center bracket supports your gallery rail shelving rods.



Standard Finishes

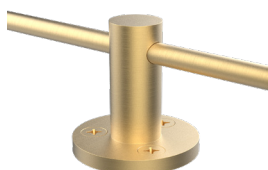


Durable brass
with sleek styling.



Brushed
Brass

Custom finishing is available upon request.



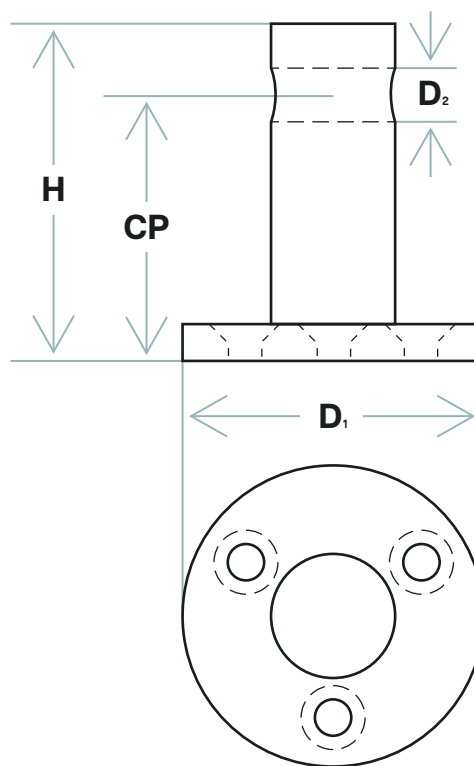
Ensures structural
integrity and
proper spacing.

Dimensions

(H)	Height	1.77"
(D ₁)	Diameter 1	1.57"
(D ₂)	Diameter 2	0.27"
(CP)	Centerpoint	1.38"

Included Hardware

(3)	Mounting screws
(1)	#10-32 set screw



Installation

1. Attach the bracket to the surface using the included mounting screws.
2. Slide the rod into the bracket and tighten the set screw.

Care and maintenance varies by finish. Given the nature of the product, typical wear and tear may be noticed with your shelving over time, such as scuffs, scratches, and dirt.

Visit [Kegworks.com/care-guide](https://www.kegworks.com/care-guide) to read our guide on how to properly prep, clean, and maintain all of our metal finishes.

Complete The System

Make sure to get all the necessary components to complete your shelving system.

