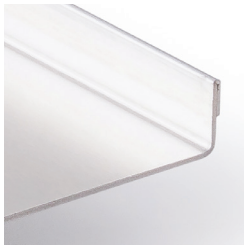
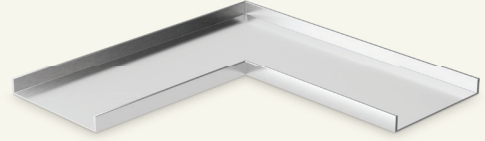


# Inside Corner

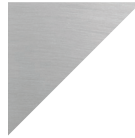
## Scupper Drink Rail

Complete and protect your bar with a professional run of stainless steel scupper drink rail.



Made of 18-gauge  
304 stainless steel.

### Standard Finishes



Brushed  
Stainless

*Custom finishing is available upon request.*



#4 satin finish.

## Dimensions

(1)	Left Back Length	12"
(2)	Right Back Length	12"
(3)	Inside Width	4.63"
(4)	Outside Width	4.88"

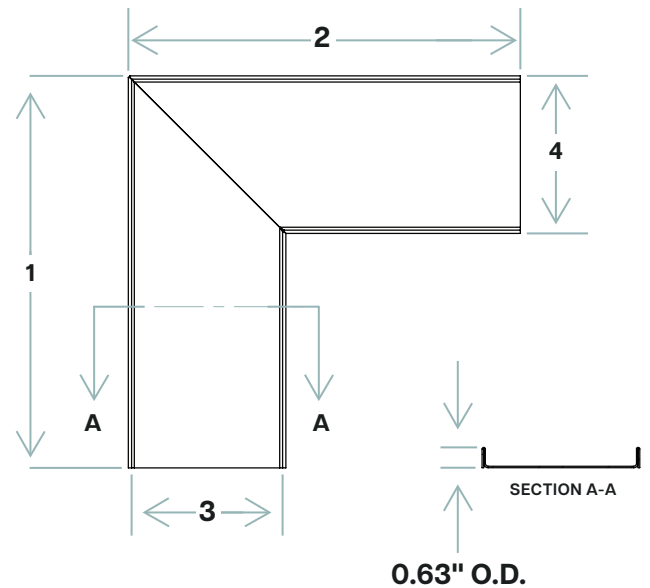
## Installation

1. Cut drink rail Item #DR-SCU sections to length (if necessary).
2. Apply adhesive to the bar top or counter substrate.
3. Adhere the first section of the drink rail section to the surface.
4. Seal the top of any seams with a mildew resistant clear silicone sealer.

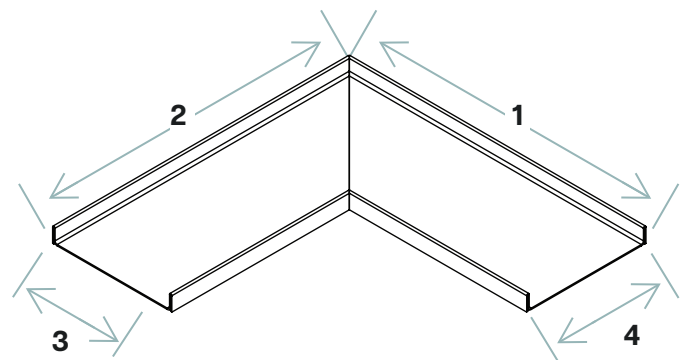
Care and maintenance varies by finish. Given the nature of the product, typical wear and tear may be noticed with your bar rail over time, such as scuffs, scratches, and dirt.

Visit [Kegworks.com/care-guide](https://www.kegworks.com/care-guide) to read our guide on how to properly prep, clean, and maintain all bar rail finishes.

## OVERHEAD VIEW



## ISOMETRIC VIEW



## Complete The System

Make sure to get all the necessary components to complete your bar rail system.

- ▶ Straight
- ▶ Corner
- ▶ End Cap
- ▶ Drip Tray